

**INTERNAL QUALITY ASSURANCE CELL
GOVT. MIZORAM LAW COLLEGE**

**STUDENTS' FEEDBACK ANALYSIS REPORT
2019-2020**

III SEMESTER LL.B

Please Note:

- a) Rating as expressed as the following:

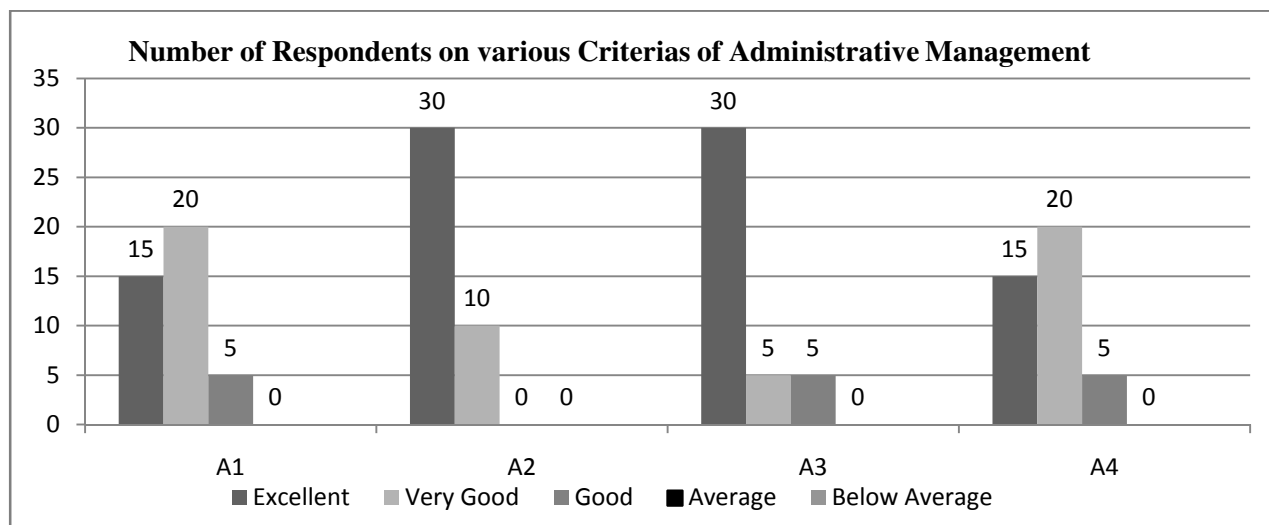
5 = Excellent	4 = Very Good	3 = Good	2 = Average	1 = Below Average
---------------	---------------	----------	-------------	-------------------

- b) Total number of respondents is 40 out of 100 students
c) Data Interpretation shows the highest average

1. ADMINISTRATIVE MANAGEMENT

CRITERIA ↓	5		4		3		2		1		Overall Average Ratings
	No. of Respondent	Percentage	No. of Respondent	Percentage	No. of Respondent	Percentage	No. of Respondent	Percentage	No. of Respondent	Percentage	
A1	15	31.9%	20	42.5%	5	10.6%	0	0	0	0	5 (Excellent)
A2	30	63.8%	10	21.2%	0	0	0	0	0	0	
A3	30	63.8%	5	10.6%	5	10.6%	0	0	0	0	
A4	15	31.9%	20	42.5%	5	10.6%	0	0	0	0	
TOTAL	90	191.4%	55	116.8%	15	31.8%	0	0	0	0	
AVERAGE	22.5	47.8%	13.7	29.2%	3.7	7.9%	0	0	0	0	

A1	Punctuality in class
A2	Regularity in conducting class
A3	Completion of syllabus/course
A4	Alternative arrangement of class in case of leave and other matters



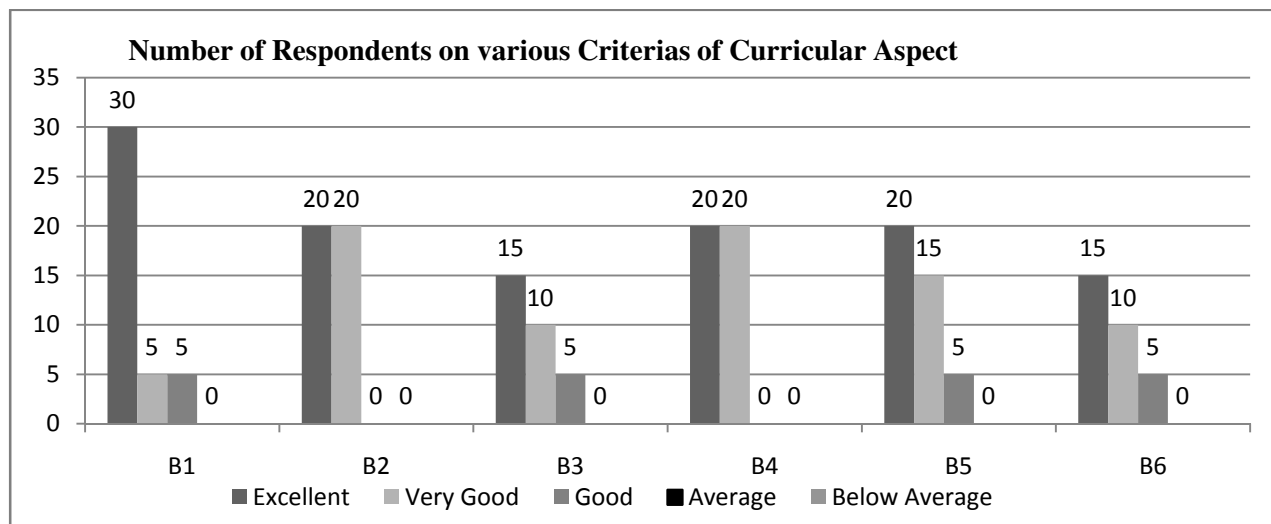
Data Interpretation: From the above data, it shows that 47.8% from the total 40 respondents have an Excellent opinion and view on Administrative management.

**INTERNAL QUALITY ASSURANCE CELL
GOVT. MIZORAM LAW COLLEGE**

2. CURRICULAR ASPECT

CRITERIA ↓	5		4		3		2		1		Overall Average Ratings
	No. of Respondent	Percentage	No. of Respondent	Percentage	No. of Respondent	Percentage	No. of Respondent	Percentage	No. of Respondent	Percentage	
B1	30	63.8%	5	10.6%	5	10.6%	0	0	0	0	5 (Excellent)
B2	20	42.5%	20	42.5%	0	0	0	0	0	0	
B3	15	31.9%	10	21.2%	5	10.6%	0	0	0	0	
B4	20	42.5%	20	42.5%	0	0	0	0	0	0	
B5	20	42.5%	15	42.5%	5	10.6%	0	0	0	0	
B6	15	31.9%	10	21.2%	5	10.6%	0	0	0	0	
TOTAL	120	255%	80	180.5%	20	42.4%	0	0	0	0	
AVERAGE	20	42.5%	13.3%	30%	3.3%	7%	0	0	0	0	

B1	Focus of the syllabus / topic
B2	Knowledge on the subject matter
B3	Delivery of planned & organized lecture
B4	Conducting class room discussions, interactions
B5	Communication skill
B6	Skill of connecting subject / topic of life experiences



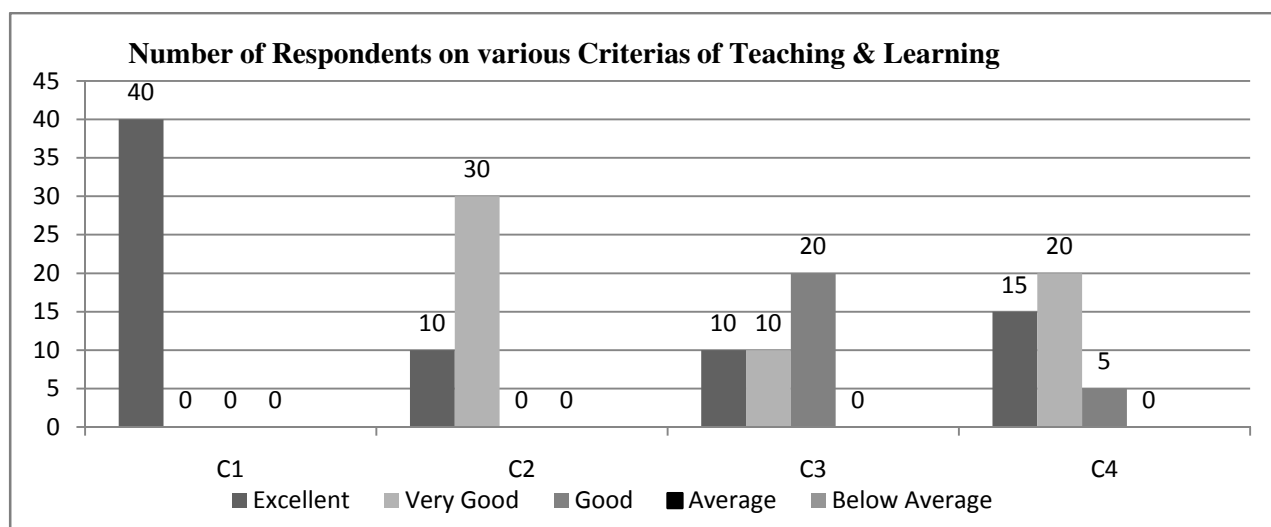
Data Interpretation: From the above data, it shows that 42.5% from the total 40 respondents have an Excellent opinion and view on Curricular Aspect.

**INTERNAL QUALITY ASSURANCE CELL
GOVT. MIZORAM LAW COLLEGE**

3. TEACHING & LEARNING

CRITERIA ↓	5		4		3		2		1		Overall Average Ratings
	No. of Respondent	Percentage	No. of Respondent	Percentage	No. of Respondent	Percentage	No. of Respondent	Percentage	No. of Respondent	Percentage	
C1	40	85%	0	0	0	0	0	0	0	0	5 (Excellent)
C2	10	21.2%	30	63.8%	0	0	0	0	0	0	
C3	10	21.2%	10	21.2%	20	42.5%	0	0	0	0	
C4	15	31.9%	20	42.5%	5	31.9%	0	0	0	0	
TOTAL	75	159.3%	60	127.5%	25	74.4%	0	0	0	0	
AVERAGE	18.7	39.8%	15	31.8%	6.3	18.6%	0	0	0	0	

C1	Use of black board / white board
C2	Use of teaching aid – ppt, etc.
C3	Use of creative teaching method for better understanding
C4	Giving assignment and test and providing feedback(s)



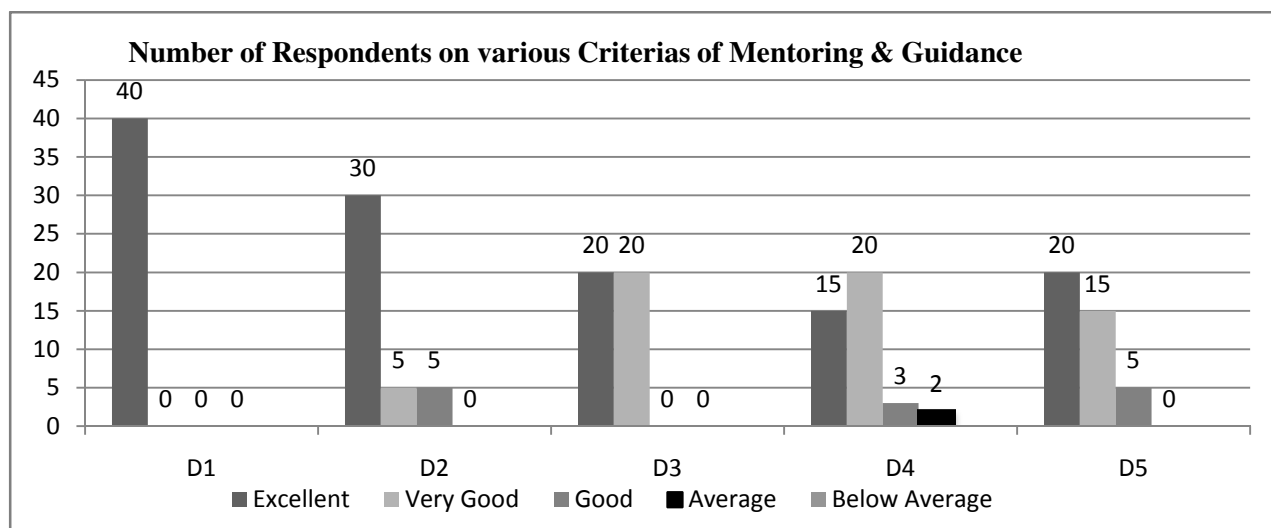
Data Interpretation: From the above data, it shows that 39.8% from the total 40 respondents have an Excellent opinion and view on Teaching & Learning.

**INTERNAL QUALITY ASSURANCE CELL
GOVT. MIZORAM LAW COLLEGE**

4. MENTORING & GUIDANCE

CRITERIA ↓	5		4		3		2		1		Overall Average Ratings
	No. of Respondent	Percentage	No. of Respondent	Percentage	No. of Respondent	Percentage	No. of Respondent	Percentage	No. of Respondent	Percentage	
D1	40	85%	0	0	0	0	0	0	0	0	5 (Excellent)
D2	30	63.8%	5	10.6%	5	10.6%	0	0	0	0	
D3	20	42.5%	20	42.5%	0	0	0	0	0	0	
D4	15	31.9%	20	42.5%	3	6%	2	4%	0	0	
D5	20	42.5%	15	31.9%	5	10.6%	0	0	0	0	
TOTAL	125	265.7%	60	127.5%	13	27.2%	2	4%	0	0	
AVERAGE	25	53%	12	25.5%	2.6	5.4%	0.4	8%	0	0	

D1	Help students irrespective of caste, ethnicity and culture.
D2	Providing and referring text books and other study materials.
D3	Providing study materials which are not readily available through resources, e-journals, open course wares, etc.
D4	Helps students having physical, emotional and learning challenges.
D5	Helps students irrespective of gender and social background.



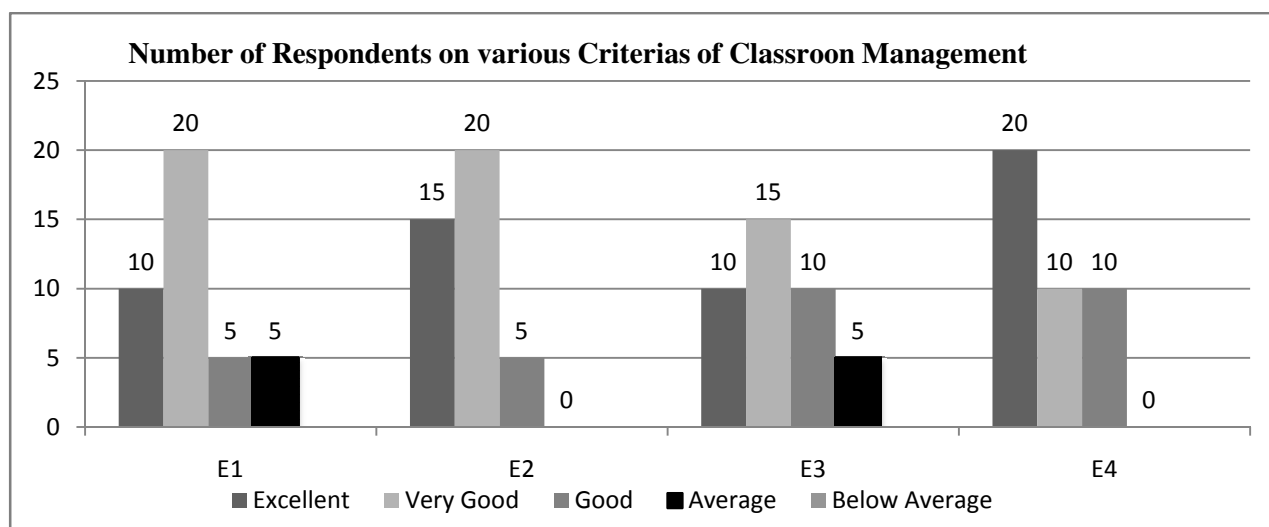
Data Interpretation: From the above data, it shows that 53% from the total 47 respondents have an Excellent opinion and view on Mentoring & Guidance.

**INTERNAL QUALITY ASSURANCE CELL
GOVT. MIZORAM LAW COLLEGE**

5. CLASSROOM MANAGEMENT

CRITERIA ↓	5		4		3		2		1		Overall Average Ratings
	No. of Respondent	Percentage	No. of Respondent	Percentage	No. of Respondent	Percentage	No. of Respondent	Percentage	No. of Respondent	Percentage	
E1	10	21.2%	20	42.5%	5	10.6%	5	10.6%	0	0	4 (Very Good)
E2	15	31.9%	20	42.5%	5	10.6%	0	0	0	0	
E3	10	21.2%	15	31.9%	10	21.2%	5	10.6%	0	0	
E4	20	42.5%	10	21.2%	10	21.2%	0	0	0	0	
TOTAL	55	116.8%	65	138%	30	63.6%	10	21.2%	0	0	
AVERAGE	13.7	29.2%	16.3%	34.5%	7.5	15.9%	2.5	5.3%	0	0	

E1	Skill in attracting attention from students in the class.
E2	Skill in addressing inappropriate student's behavior.
E3	Inspiring and motivating students for ethical conduct.
E4	Act as a role model.



Data Interpretation: From the above data, it shows that 34.5% from the total 40 respondents have a Very Good opinion and view on Classroom Management.