

**INTERNAL QUALITY ASSURANCE CELL
GOVT. MIZORAM LAW COLLEGE**

**STUDENTS' FEEDBACK ANALYSIS REPORT
2019-2020**

V SEMESTER LL.B

Please Note:

a) Rating as expressed as the following:

| | | | | |
|---------------|---------------|----------|-------------|-------------------|
| 5 = Excellent | 4 = Very Good | 3 = Good | 2 = Average | 1 = Below Average |
|---------------|---------------|----------|-------------|-------------------|

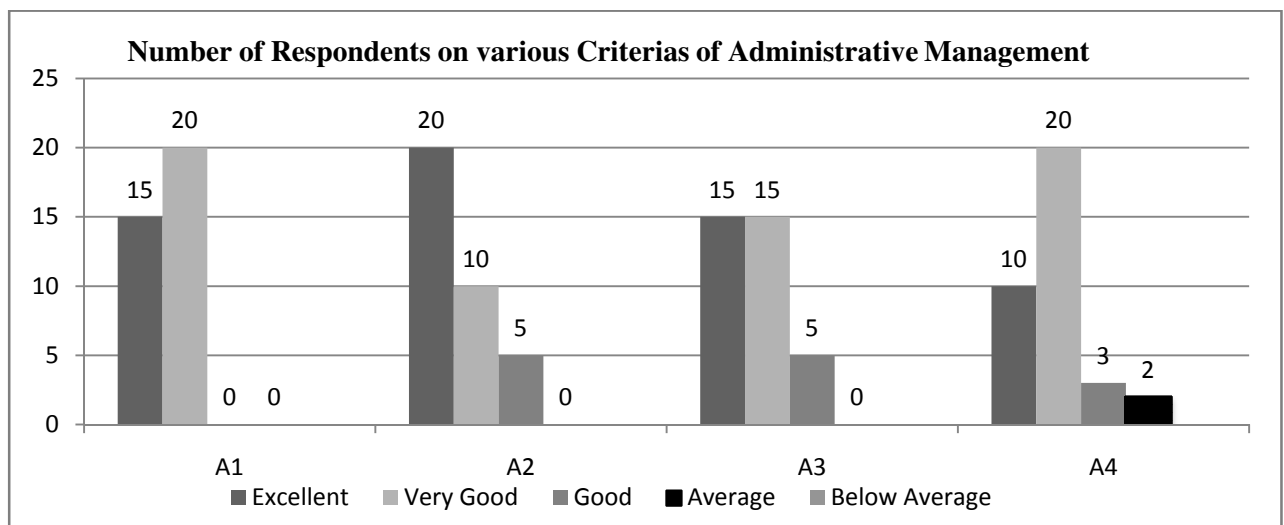
b) Total number of respondents is 40 out of 100 students

c) Data Interpretation shows the highest average

1. ADMINISTRATIVE MANAGEMENT

| CRITERIA ↓ | 5 | | 4 | | 3 | | 2 | | 1 | | Overall Average Ratings |
|----------------|----------------------|---------------|----------------------|--------------|----------------------|--------------|----------------------|-------------|----------------------|------------|-------------------------------|
| | No. of Respondent | Percentage | No. of Respondent | Percentage | No. of Respondent | Percentage | No. of Respondent | Percentage | No. of Respondent | Percentage | |
| A1 | 15 | 26.6% | 20 | 35% | 0 | 0 | 0 | 0 | 0 | 0 | 4 (Very Good) |
| A2 | 20 | 35% | 10 | 17.5% | 5 | 8% | 0 | 0 | 0 | 0 | |
| A3 | 15 | 26.6% | 15 | 26.6% | 5 | 8% | 0 | 0 | 0 | 0 | |
| A4 | 10 | 17.5% | 20 | 35% | 3 | 5% | 2 | 3.5% | 0 | 0 | |
| TOTAL | 60 | 105.7% | 65 | 114% | 13 | 22.8% | 2 | 3.5% | 0 | 0 | |
| AVERAGE | 15 | 26.4% | 16.2 | 28.5% | 3.2 | 5.7% | 0.5 | 0.8% | 0 | 0 | |

| | |
|----|---|
| A1 | Punctuality in class |
| A2 | Regularity in conducting class |
| A3 | Completion of syllabus/course |
| A4 | Alternative arrangement of class in case of leave and other matters |



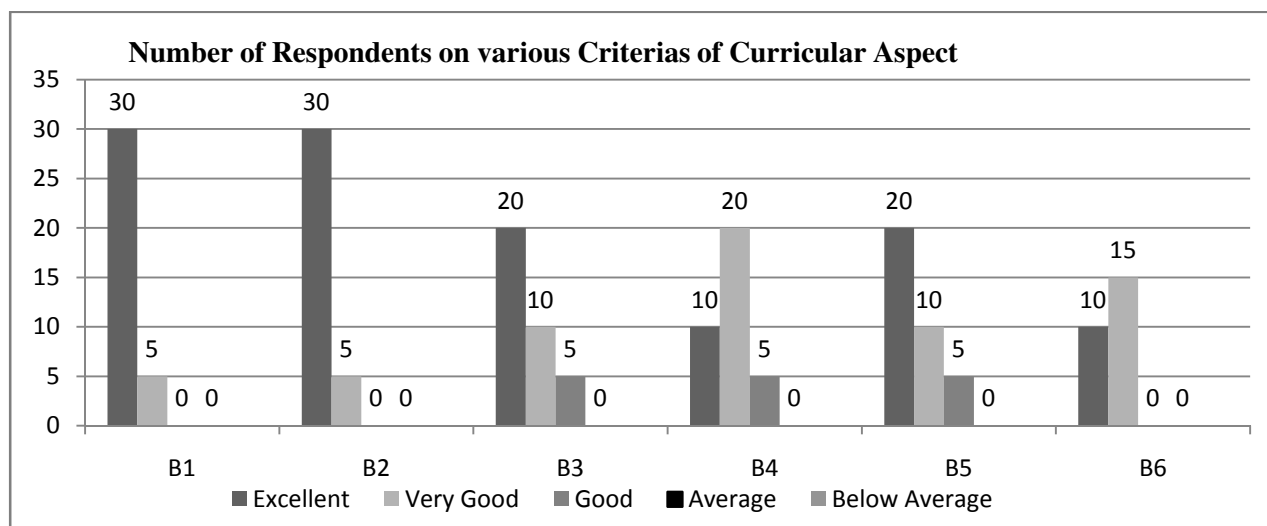
Data Interpretation: From the above data, it shows that 28.5% from the total 57 respondents have a Very Good opinion and view on Administrative management.

**INTERNAL QUALITY ASSURANCE CELL
GOVT. MIZORAM LAW COLLEGE**

2. CURRICULAR ASPECT

| CRITERIA ↓ | 5 | | 4 | | 3 | | 2 | | 1 | | Overall Average Ratings |
|----------------|-------------------|---------------|-------------------|---------------|-------------------|------------|-------------------|------------|-------------------|------------|-------------------------------|
| | No. of Respondent | Percentage | No. of Respondent | Percentage | No. of Respondent | Percentage | No. of Respondent | Percentage | No. of Respondent | Percentage | |
| B1 | 30 | 52.6% | 5 | 8% | 0 | 0 | 0 | 0 | 0 | 0 | 5 (Excellent) |
| B2 | 30 | 52.6% | 5 | 8% | 0 | 0 | 0 | 0 | 0 | 0 | |
| B3 | 20 | 35% | 10 | 17.5% | 5 | 8% | 0 | 0 | 0 | 0 | |
| B4 | 10 | 17.5% | 20 | 35% | 5 | 8% | 0 | 0 | 0 | 0 | |
| B5 | 20 | 35% | 10 | 17.5% | 5 | 8% | 0 | 0 | 0 | 0 | |
| B6 | 10 | 17.5% | 15 | 26.6% | 0 | 0 | 0 | 0 | 0 | 0 | |
| TOTAL | 120 | 210.2% | 65 | 112.6% | 15 | 24% | 0 | 0 | 0 | 0 | |
| AVERAGE | 20 | 35% | 10.8% | 18.7% | 2.5 | 4% | 0 | 0 | 0 | 0 | |

| | |
|----|---|
| B1 | Focus of the syllabus / topic |
| B2 | Knowledge on the subject matter |
| B3 | Delivery of planned & organized lecture |
| B4 | Conducting class room discussions, interactions |
| B5 | Communication skill |
| B6 | Skill of connecting subject / topic of life experiences |



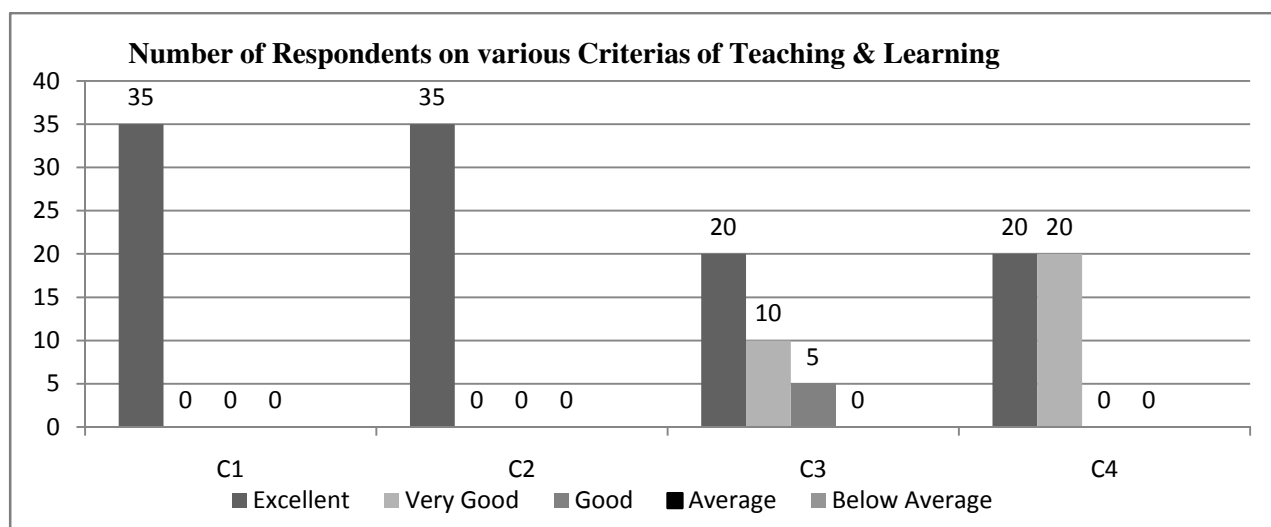
Data Interpretation: From the above data, it shows that 35% from the total 57 respondents have an Excellent opinion and view on Curricular Aspect.

**INTERNAL QUALITY ASSURANCE CELL
GOVT. MIZORAM LAW COLLEGE**

3. TEACHING & LEARNING

| CRITERIA ↓ | 5 | | 4 | | 3 | | 2 | | 1 | | Overall Average Ratings |
|----------------|-------------------|---------------|-------------------|--------------|-------------------|------------|-------------------|------------|-------------------|------------|-------------------------------|
| | No. of Respondent | Percentage | No. of Respondent | Percentage | No. of Respondent | Percentage | No. of Respondent | Percentage | No. of Respondent | Percentage | |
| C1 | 35 | 61.4% | 0 | 0 | 0 | 0 | 0 | 0 | 0 | 0 | 5 (Excellent) |
| C2 | 35 | 61.4% | 0 | 0 | 0 | 0 | 0 | 0 | 0 | 0 | |
| C3 | 20 | 35% | 10 | 17.5% | 5 | 8% | 0 | 0 | 0 | 0 | |
| C4 | 20 | 35% | 20 | 35% | 0 | 0 | 0 | 0 | 0 | 0 | |
| TOTAL | 110 | 192.8% | 30 | 52.5% | 5 | 8% | 0 | 0 | 0 | 0 | |
| AVERAGE | 27.5 | 48.2% | 7.5 | 13% | 1.25% | 2 | 0 | 0 | 0 | 0 | |

| | |
|----|--|
| C1 | Use of black board / white board |
| C2 | Use of teaching aid – ppt, etc. |
| C3 | Use of creative teaching method for better understanding |
| C4 | Giving assignment and test and providing feedback(s) |



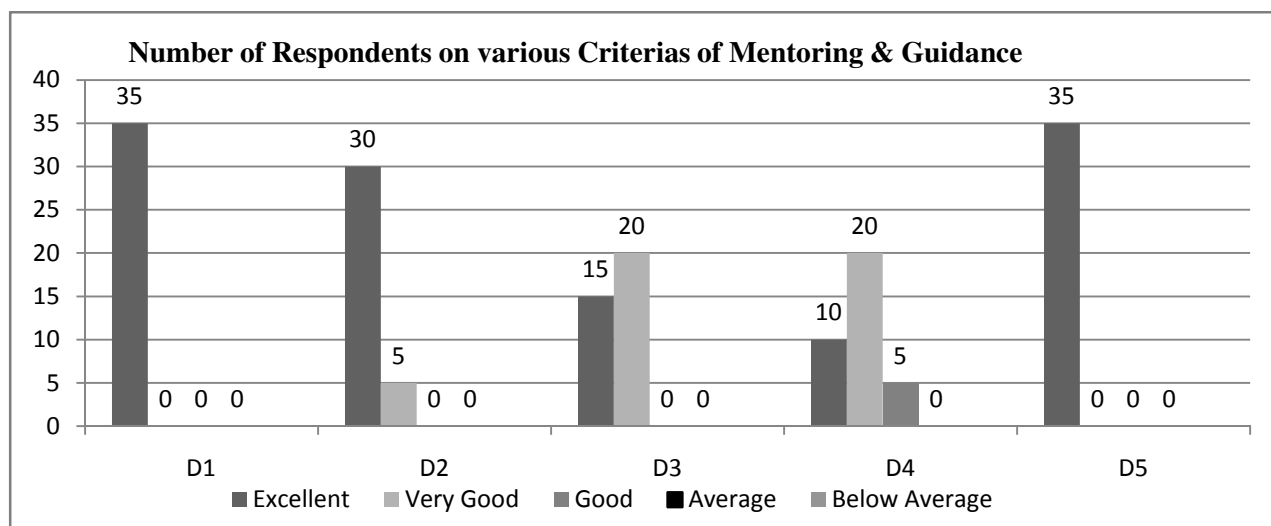
Data Interpretation: From the above data, it shows that 48.2% from the total 57 respondents have an Excellent opinion and view on teaching and learning.

**INTERNAL QUALITY ASSURANCE CELL
GOVT. MIZORAM LAW COLLEGE**

4. MENTORING & GUIDANCE

| CRITERIA ↓ | 5 | | 4 | | 3 | | 2 | | 1 | | Overall Average Ratings |
|----------------|-------------------|---------------|-------------------|--------------|-------------------|-------------|-------------------|------------|-------------------|------------|-------------------------------|
| | No. of Respondent | Percentage | No. of Respondent | Percentage | No. of Respondent | Percentage | No. of Respondent | Percentage | No. of Respondent | Percentage | |
| | D1 | 35 | 61.4% | 0 | 0 | 0 | 0 | 0 | 0 | 0 | |
| D2 | 30 | 52.6% | 5 | 8.7% | 0 | 0 | 0 | 0 | 0 | 0 | |
| D3 | 15 | 26.3% | 20 | 35% | 0 | 0 | 0 | 0 | 0 | 0 | |
| D4 | 10 | 17.5% | 20 | 35% | 5 | 8.7% | 0 | 0 | 0 | 0 | |
| D5 | 35 | 61.4% | 0 | 0 | 0 | 0 | 0 | 0 | 0 | 0 | |
| TOTAL | 125 | 219.2% | 45 | 78.7% | 5 | 8.7% | 0 | 0 | 0 | 0 | |
| AVERAGE | 25 | 43.8% | 9 | 15.7% | 1 | 1.7% | 0 | 0 | 0 | 0 | |

| | |
|----|--|
| D1 | Help students irrespective of caste, ethnicity and culture. |
| D2 | Providing and referring text books and other study materials. |
| D3 | Providing study materials which are not readily available through resources, e-journals, open course wares, etc. |
| D4 | Helps students having physical, emotional and learning challenges. |
| D5 | Helps students irrespective of gender and social background. |



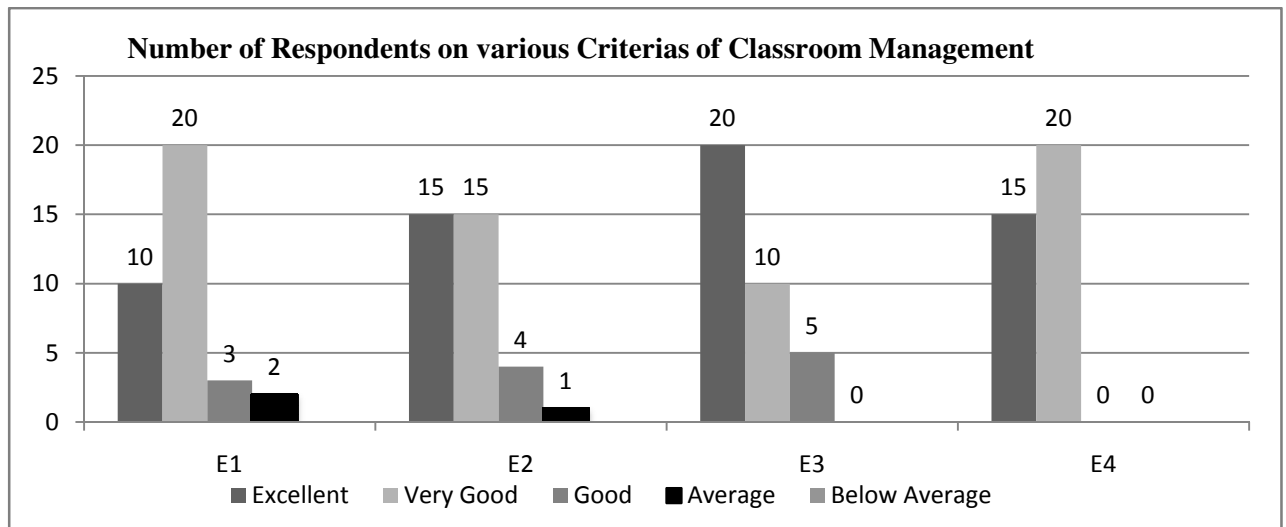
Data Interpretation: From the above data, it shows that 43.8% from the total 57 respondents have an Excellent opinion and view on Mentoring & Guidance.

**INTERNAL QUALITY ASSURANCE CELL
GOVT. MIZORAM LAW COLLEGE**

5. CLASSROOM MANAGEMENT

| CRITERIA ↓ | 5 | | 4 | | 3 | | 2 | | 1 | | Overall Average Ratings |
|----------------|-------------------|---------------|-------------------|---------------|-------------------|------------|-------------------|-------------|-------------------|------------|-------------------------------|
| | No. of Respondent | Percentage | No. of Respondent | Percentage | No. of Respondent | Percentage | No. of Respondent | Percentage | No. of Respondent | Percentage | |
| E1 | 10 | 17.5% | 20 | 35% | 3 | 5% | 2 | 3.5% | 0 | 0 | 5(Very Good) |
| E2 | 15 | 26.3% | 15 | 26.3% | 4 | 7% | 1 | 1.7% | 0 | 0 | |
| E3 | 20 | 35% | 10 | 17.5% | 5 | 8% | 0 | 0 | 0 | 0 | |
| E4 | 15 | 26.3% | 20 | 35% | 0 | 0 | 0 | 0 | 0 | 0 | |
| TOTAL | 60 | 105.1% | 65 | 113.8% | 12 | 20% | 3 | 5.2% | 0 | 0 | |
| AVERAGE | 15 | 26.3% | 16.3 | 28.5% | 3 | 5% | 0.75 | 1.3% | 0 | 0 | |

| | |
|----|---|
| E1 | Skill in attracting attention from students in the class. |
| E2 | Skill in addressing inappropriate student's behavior. |
| E3 | Inspiring and motivating students for ethical conduct. |
| E4 | Act as a role model. |



Data Interpretation: From the above data, it shows that 28.5% from the total 57 respondents have a Very Good opinion and view on Classroom management.