

**INTERNAL QUALITY ASSURANCE CELL
GOVT. MIZORAM LAW COLLEGE**

**STUDENTS' FEEDBACK ANALYSIS REPORT
2019-2020**

I SEMESTER LL.B

Please Note:

- a) Rating as expressed as the following:

| | | | | |
|---------------|---------------|----------|-------------|-------------------|
| 5 = Excellent | 4 = Very Good | 3 = Good | 2 = Average | 1 = Below Average |
|---------------|---------------|----------|-------------|-------------------|

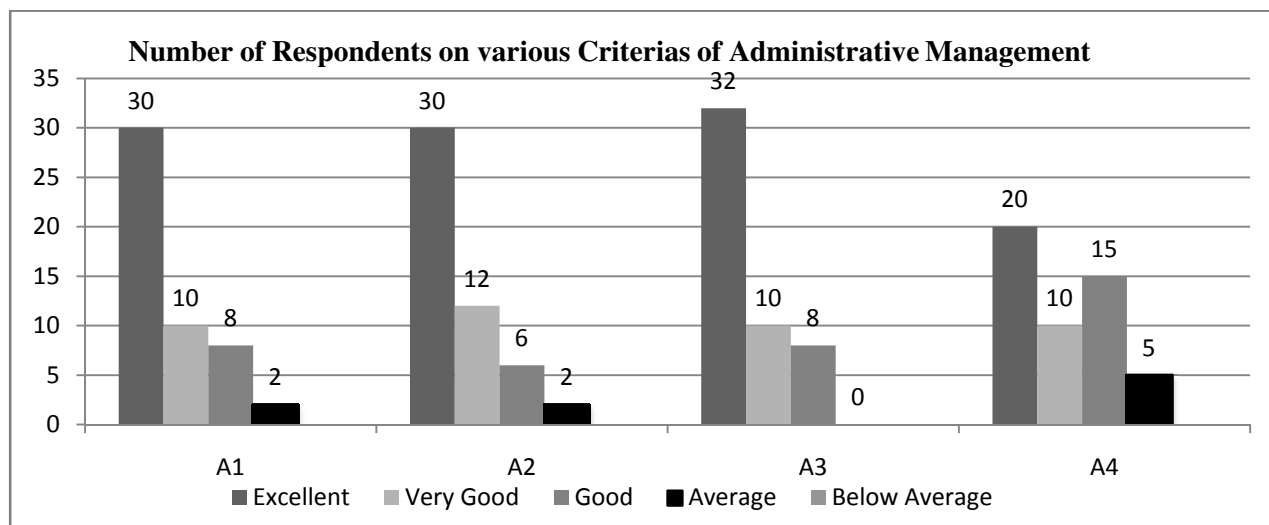
- b) Total number of respondents is 40 out of 100 students

- c) Data Interpretation shows the highest average

1. ADMINISTRATIVE MANAGEMENT

| CRITERIA ↓ | 5 | | 4 | | 3 | | 2 | | 1 | | Overall Average Ratings |
|----------------|----------------------|---------------|----------------------|--------------|----------------------|------------|----------------------|--------------|----------------------|------------|-------------------------------|
| | No. of Respondent | Percentage | No. of Respondent | Percentage | No. of Respondent | Percentage | No. of Respondent | Percentage | No. of Respondent | Percentage | |
| A1 | 30 | 47.6% | 10 | 15.8% | 8 | 12.6% | 2 | 0.03% | 0 | 0 | 5 (Excellent) |
| A2 | 30 | 47.6% | 12 | 19% | 6 | 0.09% | 2 | 0.03% | 0 | 0 | |
| A3 | 32 | 50.7% | 10 | 15.8% | 8 | 12.6% | 0 | 0 | 0 | 0 | |
| A4 | 20 | 31.7% | 10 | 15.8% | 15 | 23.8% | 5 | 0.07% | 0 | 0 | |
| TOTAL | 112 | 177.6% | 42 | 66.4% | 37 | 49% | 9 | 0.13% | 0 | 0 | |
| AVERAGE | 28 | 44% | 11 | 17% | 9 | 12% | 2 | 0.03% | 0 | 0 | |

| | |
|----|---|
| A1 | Punctuality in class |
| A2 | Regularity in conducting class |
| A3 | Completion of syllabus/course |
| A4 | Alternative arrangement of class in case of leave and other matters |



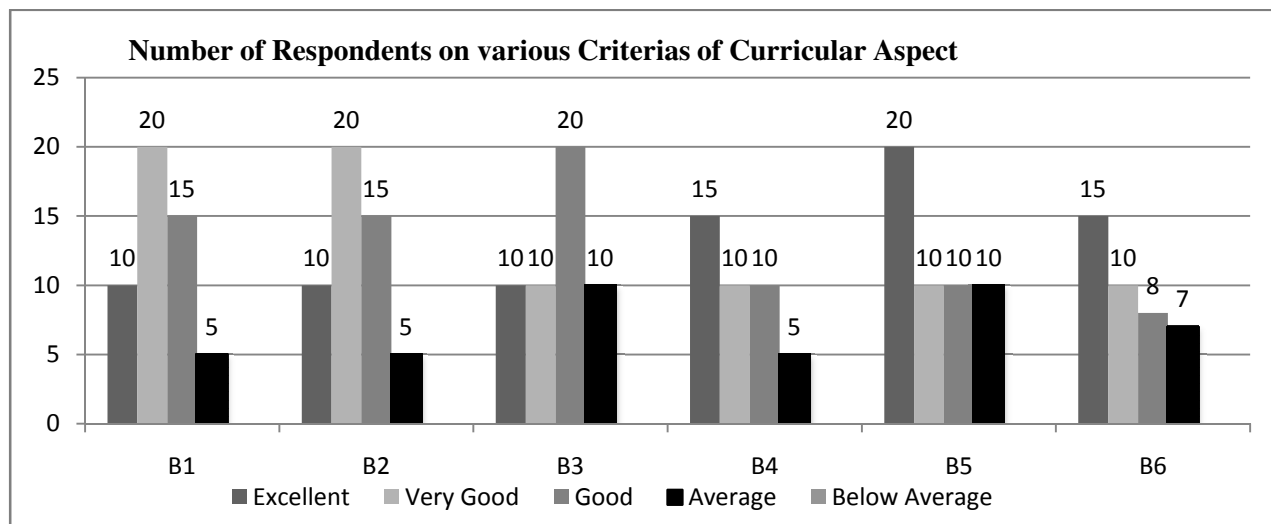
Data Interpretation: From the above data, it shows that 44% from the total 63 respondents have an Excellent opinion and view on Administrative Management.

**INTERNAL QUALITY ASSURANCE CELL
GOVT. MIZORAM LAW COLLEGE**

2. CURRICULAR ASPECT

| CRITERIA ↓ | 5 | | 4 | | 3 | | 2 | | 1 | | Overall Average Ratings |
|----------------|----------------------|---------------|----------------------|---------------|----------------------|---------------|----------------------|--------------|----------------------|------------|-------------------------------|
| | No. of Respondent | Percentage | No. of Respondent | Percentage | No. of Respondent | Percentage | No. of Respondent | Percentage | No. of Respondent | Percentage | |
| B1 | 10 | 15.8% | 20 | 31.7% | 15 | 23.8% | 5 | 0.07% | 0 | 0 | 5 (Excellent) |
| B2 | 10 | 15.8% | 20 | 31.7% | 15 | 23.8% | 5 | 0.07% | 0 | 0 | |
| B3 | 10 | 15.8% | 10 | 15.8% | 20 | 31.7% | 10 | 15.8% | 0 | 0 | |
| B4 | 15 | 23.8% | 10 | 15.8% | 10 | 15.8% | 5 | 0.07% | 0 | 0 | |
| B5 | 20 | 31.7% | 10 | 15.8% | 10 | 15.8% | 10 | 15.8% | 0 | 0 | |
| B6 | 15 | 23.8% | 10 | 15.8% | 8 | 12.6% | 7 | 0.1% | 0 | 0 | |
| TOTAL | 80 | 126.7% | 80 | 126.6% | 78 | 123.5% | 42 | 31.9% | 0 | 0 | |
| AVERAGE | 13 | 21% | 13 | 21% | 13 | 20.5% | 7 | 5.3% | 0 | 0 | |

| | |
|----|---|
| B1 | Focus of the syllabus / topic |
| B2 | Knowledge on the subject matter |
| B3 | Delivery of planned & organized lecture |
| B4 | Conducting class room discussions, interactions |
| B5 | Communication skill |
| B6 | Skill of connecting subject / topic of life experiences |



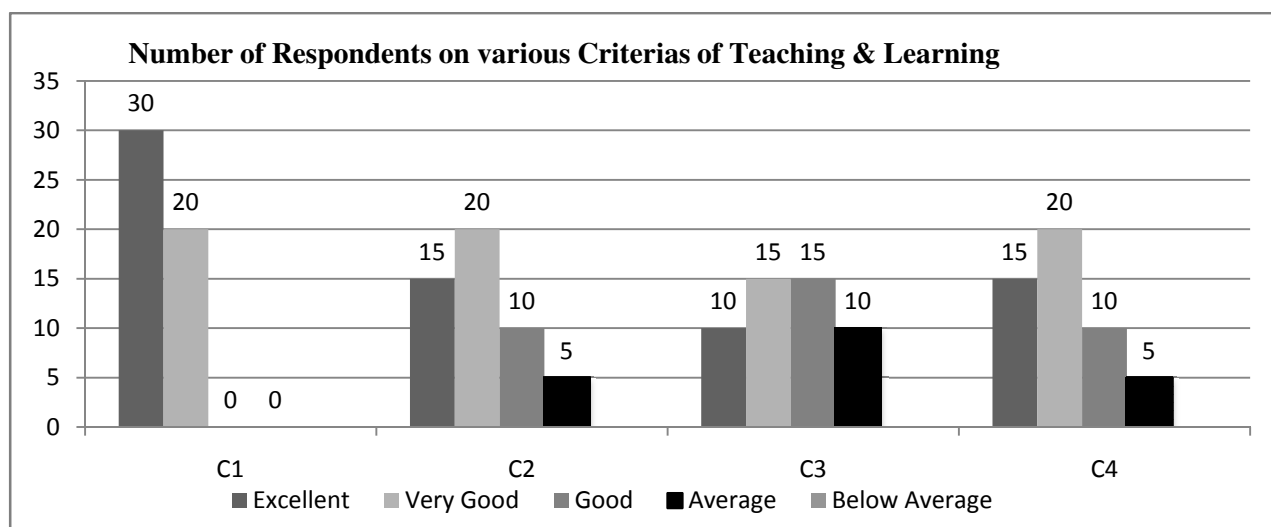
Data Interpretation: From the above data, it shows that 21% from the total 63 respondents have an Excellent opinion and view on Curricular Aspect.

**INTERNAL QUALITY ASSURANCE CELL
GOVT. MIZORAM LAW COLLEGE**

3. TEACHING & LEARNING

| CRITERIA ↓ | 5 | | 4 | | 3 | | 2 | | 1 | | Overall Average Ratings |
|----------------|----------------------|--------------|----------------------|---------------|----------------------|--------------|----------------------|--------------|----------------------|------------|-------------------------------|
| | No. of Respondent | Percentage | No. of Respondent | Percentage | No. of Respondent | Percentage | No. of Respondent | Percentage | No. of Respondent | Percentage | |
| C1 | 30 | 47.6% | 20 | 31.7% | 0 | 0 | 0 | 0 | 0 | 0 | 4 (Very Good) |
| C2 | 15 | 23.8% | 20 | 31.7% | 10 | 15.8% | 5 | 0.07% | 0 | 0 | |
| C3 | 10 | 15.8% | 15 | 23.8% | 15 | 23.8% | 10 | 15.8% | 0 | 0 | |
| C4 | 15 | 23.8% | 20 | 31.7% | 10 | 15.8% | 5 | 0.07% | 0 | 0 | |
| TOTAL | 70 | 111 % | 75 | 118.9% | 35 | 55.4% | 20 | 15.9% | 0 | 0 | |
| AVERAGE | 17.5 | 27.7% | 18.8 | 29.7% | 8.8 | 13.8% | 5 | 3.9% | 0 | 0 | |

| | |
|----|--|
| C1 | Use of black board / white board |
| C2 | Use of teaching aid – ppt, etc. |
| C3 | Use of creative teaching method for better understanding |
| C4 | Giving assignment and test and providing feedback(s) |



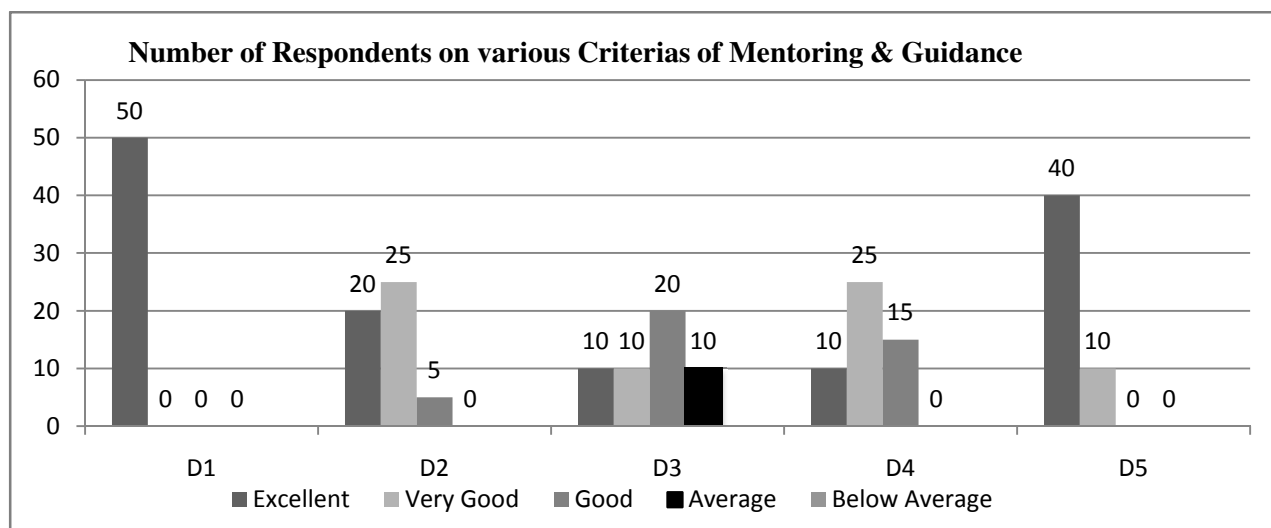
Data Interpretation: From the above data, it shows that 29.7% from the total 63 respondents have a Very Good opinion and view on Teaching & Learning.

**INTERNAL QUALITY ASSURANCE CELL
GOVT. MIZORAM LAW COLLEGE**

4. MENTORING & GUIDANCE

| CRITERIA ↓ | 5 | | 4 | | 3 | | 2 | | 1 | | Overall Average Ratings |
|----------------|----------------------|---------------|----------------------|---------------|----------------------|--------------|----------------------|--------------|----------------------|------------|-------------------------------|
| | No. of Respondent | Percentage | No. of Respondent | Percentage | No. of Respondent | Percentage | No. of Respondent | Percentage | No. of Respondent | Percentage | |
| D1 | 50 | 79% | 0 | 0 | 0 | 0 | 0 | 0 | 0 | 0 | 5 (Excellent) |
| D2 | 20 | 31.7% | 25 | 39.6% | 5 | 0.07% | 0 | 0 | 0 | 0 | |
| D3 | 10 | 15.8% | 10 | 15.8% | 20 | 31.7% | 10 | 15.8% | 0 | 0 | |
| D4 | 10 | 15.8% | 25 | 39.6% | 15 | 23.8% | 0 | 0 | 0 | 0 | |
| D5 | 40 | 63.4% | 10 | 15.8% | 0 | 0 | 0 | 0 | 0 | 0 | |
| TOTAL | 130 | 189.9% | 70 | 110.8% | 40 | 55.6% | 10 | 15.8% | 0 | 0 | |
| AVERAGE | 26 | 37.9% | 14 | 22% | 8 | 11% | 2 | 3.2% | 0 | 0 | |

| | |
|----|--|
| D1 | Help students irrespective of caste, ethnicity and culture. |
| D2 | Providing and referring text books and other study materials. |
| D3 | Providing study materials which are not readily available through resources, e-journals, open course wares, etc. |
| D4 | Helps students having physical, emotional and learning challenges. |
| D5 | Helps students irrespective of gender and social background. |



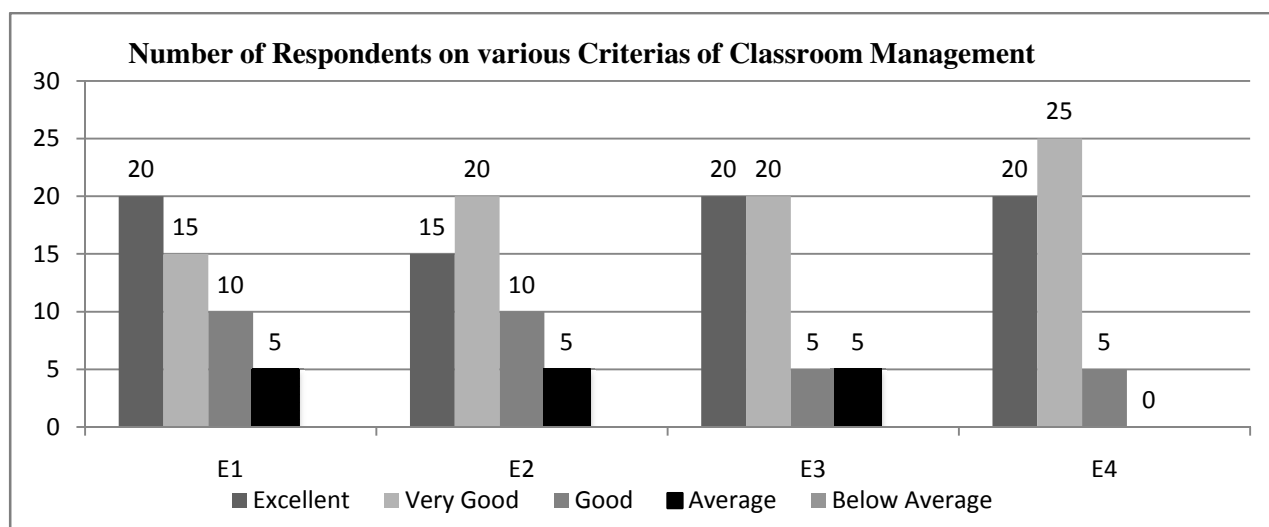
Data Interpretation: From the above data, it shows that 37.9% from the total 63 respondents have an Excellent opinion and view on Mentoring & Guidance.

**INTERNAL QUALITY ASSURANCE CELL
GOVT. MIZORAM LAW COLLEGE**

5. CLASSROOM MANAGEMENT

| CRITERIA ↓ | 5 | | 4 | | 3 | | 2 | | 1 | | Overall Average Ratings |
|----------------|----------------------|---------------|----------------------|---------------|----------------------|---------------|----------------------|--------------|----------------------|------------|-------------------------------|
| | No. of Respondent | Percentage | No. of Respondent | Percentage | No. of Respondent | Percentage | No. of Respondent | Percentage | No. of Respondent | Percentage | |
| E1 | 20 | 31.7% | 15 | 23.8% | 10 | 15.8% | 5 | 0.07% | 0 | 0 | 4 (Very Good) |
| E2 | 15 | 23.8% | 20 | 31.7% | 10 | 15.8% | 5 | 0.07% | 0 | 0 | |
| E3 | 20 | 31.7% | 20 | 31.7% | 5 | 0.07% | 5 | 0.07% | 0 | 0 | |
| E4 | 20 | 31.7% | 25 | 39.6% | 5 | 0.07% | 0 | 0 | 0 | 0 | |
| TOTAL | 75 | 118.9% | 80 | 126.8% | 30 | 31.74% | 15 | 0.21% | 0 | 0 | |
| AVERAGE | 18.75 | 29.7% | 20 | 31.7% | 7.5 | 7.9% | 3.7 | 0.05% | 0 | 0 | |

| | |
|----|---|
| E1 | Skill in attracting attention from students in the class. |
| E2 | Skill in addressing inappropriate student's behavior. |
| E3 | Inspiring and motivating students for ethical conduct. |
| E4 | Act as a role model. |



Data Interpretation: From the above data, it shows that 31.7% from the total 63 respondents have a Very Good opinion and view on Classroom Management.