

**INTERNAL QUALITY ASSURANCE CELL  
GOVT. MIZORAM LAW COLLEGE**

**STUDENTS' FEEDBACK ANALYSIS REPORT  
2022-2023**

**1<sup>st</sup> YEAR LL.B**

Please Note:

a) Rating as expressed as the following:

5 = Excellent	4 = Very Good	3 = Good	2 = Average	1 = Below Average
---------------	---------------	----------	-------------	-------------------

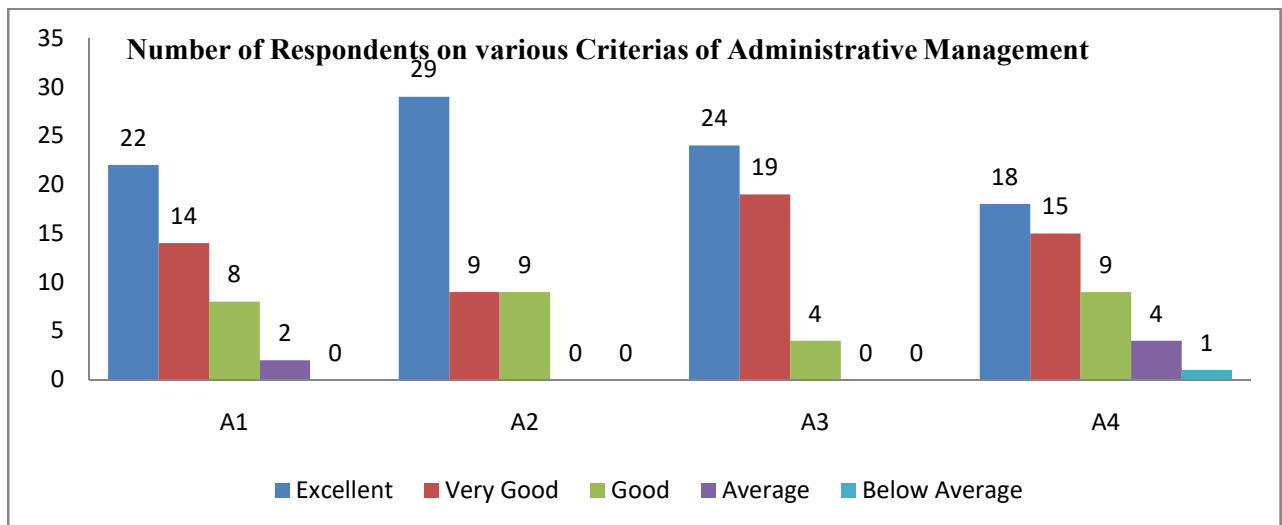
b) Total number of respondents is 47 out of 71 students

c) Data Interpretation shows the highest average

**1. ADMINISTRATIVE MANAGEMENT**

CRITERIA ↓	5		4		3		2		1		Overall Average Ratings
	No. of Respondent	Percentage	No. of Respondent	Percentage	No. of Respondent	Percentage	No. of Respondent	Percentage	No. of Respondent	Percentage	
A1	22	47	14	30	8	17	2	4	0	0	<b>5 (Excellent)</b>
A2	29	62	9	19	9	19	0	0	0	0	
A3	24	51	19	40	4	9	0	0	0	0	
A4	18	38	15	32	9	19	4	9	1	2	
<b>TOTAL</b>	<b>93</b>	<b>198</b>	<b>57</b>	<b>121</b>	<b>30</b>	<b>64</b>	<b>6</b>	<b>13</b>	<b>1</b>	<b>2</b>	
<b>AVERAGE</b>	23.3	49.5	14.3	30.3	7.5	16	1.5	3.25	0.25	0.5	

A1	Punctuality in class
A2	Regularity in conducting class
A3	Completion of syllabus/course
A4	Alternative arrangement of class in case of leave and other matters



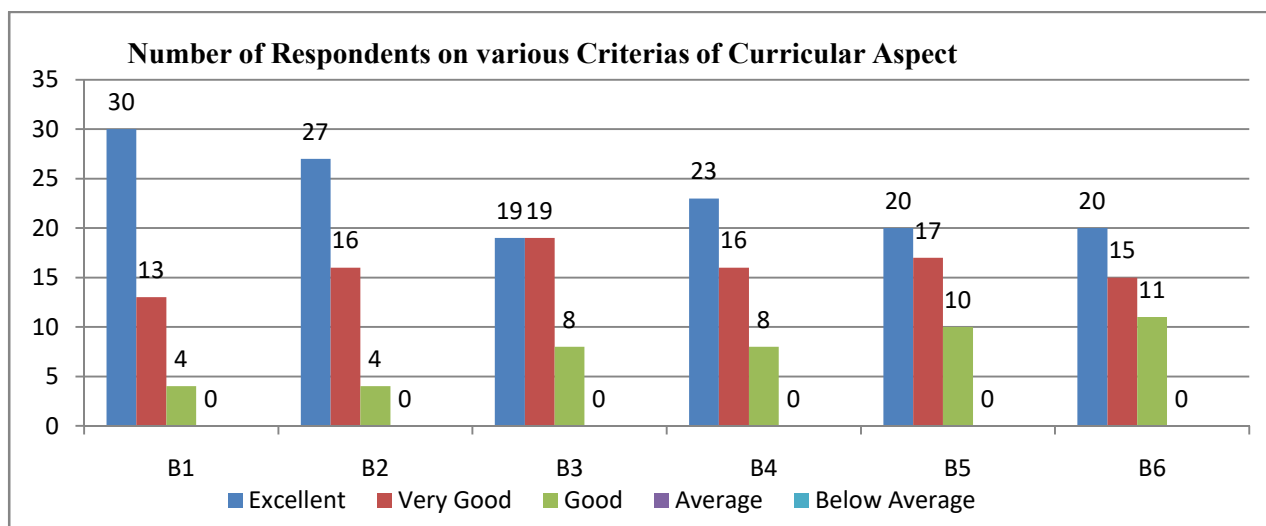
**Data Interpretation:** From the above data, it shows that 49.5% from the total 47 respondents have an Excellent opinion and view on Administrative Management.

**INTERNAL QUALITY ASSURANCE CELL  
GOVT. MIZORAM LAW COLLEGE**

**2. CURRICULAR ASPECT**

CRITERIA ↓	5		4		3		2		1		Overall Average Ratings
	No. of Respondent	Percentage	No. of Respondent	Percentage	No. of Respondent	Percentage	No. of Respondent	Percentage	No. of Respondent	Percentage	
B1	30	64	13	28	4	9	0	0	0	0	<b>5 (Excellent)</b>
B2	27	57	16	34	4	9	0	0	0	0	
B3	19	40	19	40	8	17	0	0	0	0	
B4	23	49	16	34	8	17	0	0	0	0	
B5	20	43	17	36	10	21	0	0	0	0	
B6	20	43	15	32	11	23	0	0	0	0	
<b>TOTAL</b>	<b>139</b>	<b>296</b>	<b>96</b>	<b>204</b>	<b>45</b>	<b>96</b>	<b>0</b>	<b>0</b>	<b>0</b>	<b>0</b>	
<b>AVERAGE</b>	<b>23.2</b>	<b>49.3</b>	<b>16</b>	<b>34</b>	<b>7.5</b>	<b>16</b>	<b>0</b>	<b>0</b>	<b>0</b>	<b>0</b>	

B1	Focus of the syllabus / topic
B2	Knowledge on the subject matter
B3	Delivery of planned & organized lecture
B4	Conducting class room discussions, interactions
B5	Communication skill
B6	Skill of connecting subject / topic of life experiences



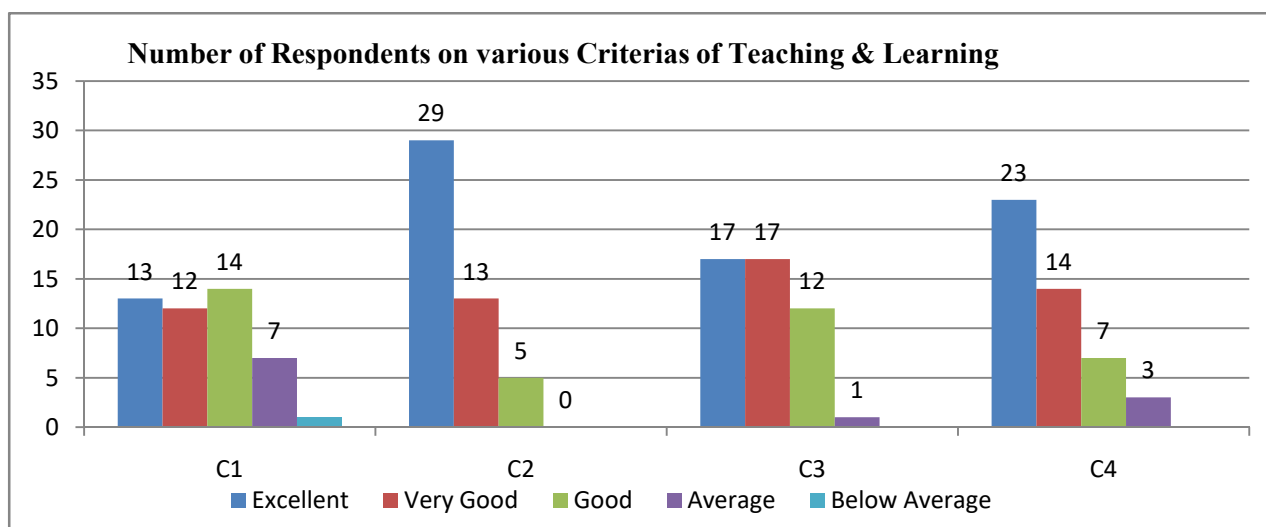
**Data Interpretation:** From the above data, it shows that 49.3% from the total 47 respondents have an Excellent opinion and view on Curricular Aspect.

**INTERNAL QUALITY ASSURANCE CELL  
GOVT. MIZORAM LAW COLLEGE**

**3. TEACHING & LEARNING**

CRITERIA ↓	5		4		3		2		1		Overall Average Ratings
	No. of Respondent	Percentage	No. of Respondent	Percentage	No. of Respondent	Percentage	No. of Respondent	Percentage	No. of Respondent	Percentage	
C1	13	28	12	26	14	30	7	15	1	2	<b>5 (Excellent)</b>
C2	29	62	13	28	5	11	0	0	0	0	
C3	17	36	17	36	12	26	1	2	0	0	
C4	23	49	14	30	7	15	3	6	0	0	
<b>TOTAL</b>	<b>82</b>	<b>175</b>	<b>56</b>	<b>120</b>	<b>38</b>	<b>82</b>	<b>11</b>	<b>23</b>	<b>1</b>	<b>2</b>	
<b>AVERAGE</b>	<b>20.5</b>	<b>43.8</b>	<b>14</b>	<b>30</b>	<b>9.5</b>	<b>20.5</b>	<b>2.75</b>	<b>5.75</b>	<b>0.25</b>	<b>0.5</b>	

C1	Use of black board / white board
C2	Use of teaching aid – ppt, etc.
C3	Use of creative teaching method for better understanding
C4	Giving assignment and test and providing feedback(s)



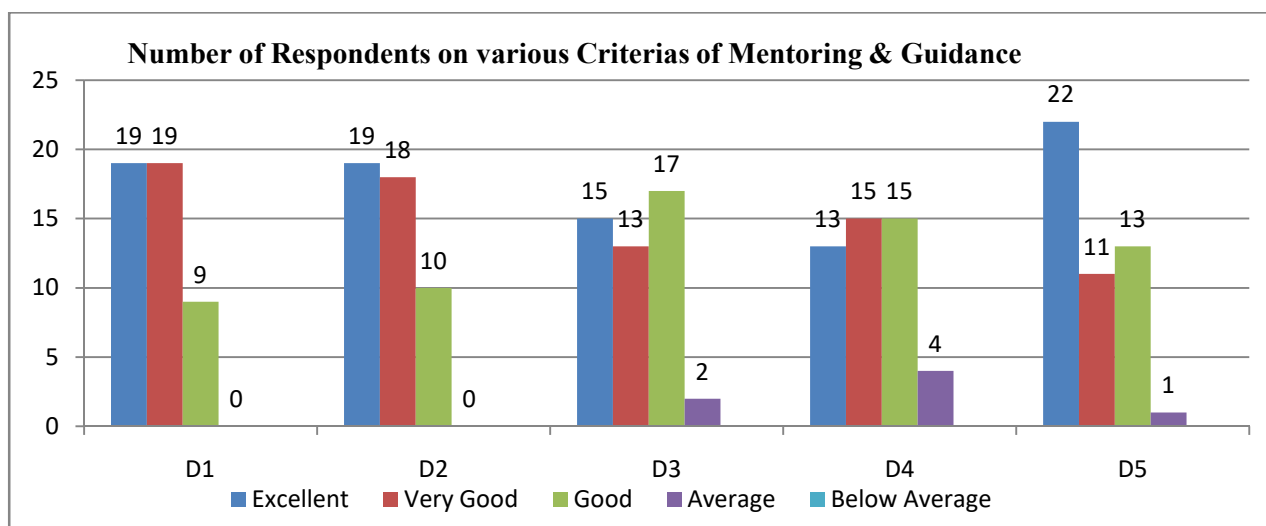
**Data Interpretation:** From the above data, it shows that 43.8 % from the total 47 respondents have an Excellent opinion and view on Teaching & Learning.

**INTERNAL QUALITY ASSURANCE CELL  
GOVT. MIZORAM LAW COLLEGE**

**4. MENTORING & GUIDANCE**

CRITERIA ↓	5		4		3		2		1		Overall Average Ratings
	No. of Respondent	Percentage	No. of Respondent	Percentage	No. of Respondent	Percentage	No. of Respondent	Percentage	No. of Respondent	Percentage	
D1	19	40	19	40	9	19	0	0	0	0	<b>5 (Excellent)</b>
D2	19	40	18	38	10	21	0	0	0	0	
D3	15	32	13	28	17	36	2	4	0	0	
D4	13	28	15	32	15	32	4	9	0	0	
D5	22	47	11	23	13	28	1	2	0	0	
<b>TOTAL</b>	<b>66</b>	<b>140</b>	<b>65</b>	<b>138</b>	<b>51</b>	<b>108</b>	<b>6</b>	<b>13</b>	<b>0</b>	<b>0</b>	
<b>AVERAGE</b>	<b>16.5</b>	<b>35</b>	<b>16.3</b>	<b>34.5</b>	<b>12.8</b>	<b>27</b>	<b>1.5</b>	<b>3.25</b>	<b>0</b>	<b>0</b>	

D1	Help students irrespective of caste, ethnicity and culture.
D2	Providing and referring text books and other study materials.
D3	Providing study materials which are not readily available through resources, e-journals, open course wares, etc.
D4	Helps students having physical, emotional and learning challenges.
D5	Helps students irrespective of gender and social background.



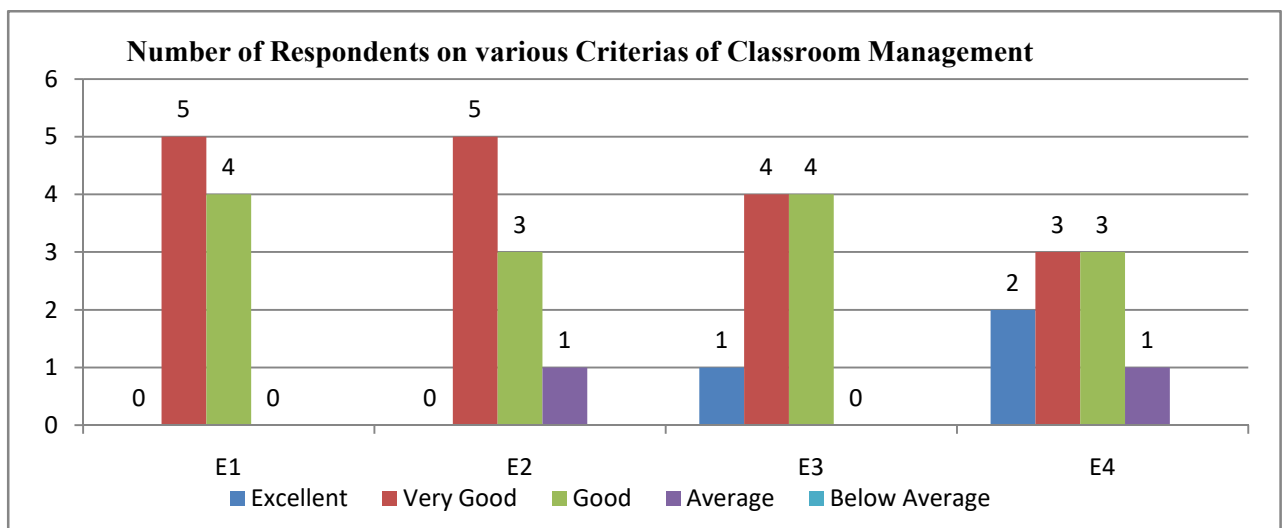
**Data Interpretation:** From the above data, it shows that 35% from the total 47 respondents have an Excellent opinion and view on Mentoring & Guidance.

**INTERNAL QUALITY ASSURANCE CELL  
GOVT. MIZORAM LAW COLLEGE**

**5. CLASSROOM MANAGEMENT**

CRITERIA ↓	5		4		3		2		1		Overall Average Ratings
	No. of Respondent	Percentage	No. of Respondent	Percentage	No. of Respondent	Percentage	No. of Respondent	Percentage	No. of Respondent	Percentage	
E1	19	40	14	30	14	30	0	0	0	0	<b>4 (Very Good)</b>
E2	19	40	14	30	13	28	1	2	0	0	
E3	20	43	15	32	11	23	1	2	0	0	
E4	20	43	12	26	13	28	2	4	0	0	
<b>TOTAL</b>	<b>78</b>	<b>166</b>	<b>55</b>	<b>118</b>	<b>51</b>	<b>109</b>	<b>4</b>	<b>8</b>	<b>0</b>	<b>0</b>	
<b>AVERAGE</b>	<b>19.5</b>	<b>41.5</b>	<b>13.8</b>	<b>29.5</b>	<b>12.8</b>	<b>27.3</b>	<b>1</b>	<b>2</b>	<b>0</b>	<b>0</b>	

E1	Skill in attracting attention from students in the class.
E2	Skill in addressing inappropriate student's behavior.
E3	Inspiring and motivating students for ethical conduct.
E4	Act as a role model.



**Data Interpretation:** From the above data, it shows that 41.5% from the total 47 respondents have an Excellent opinion and view on Classroom Management.

  
**Co-ordinator (IQAC)**  
**Govt. Mizoram Law College**  
**Aizawl : Mizoram**

  
**(Dr. ESTHER L. CHHANGTE)**  
**Principal**  
**Govt. Mizoram Law College**  
**Aizawl : Mizoram**